

SCALE 1 : 750 METRES

0 2 4 8 10 15 20 30 50 70

SURVEYORS ON SITE INC.

THE INTENDED PLOT SIZE OF THIS PLAN IS 609mm IN WIDTH BY 914mm IN HEIGHT WHEN PLOTTED AT A SCALE OF 1:750.

Q	.....	MONUMENT PLANTED
■	.....	MONUMENT FOUND
SIB	.....	STANDARD IRON BAR
SSIB	.....	SHORT STANDARD IRON BAR
IB	.....	IRON BAR
CM	.....	CONCRETE MONUMENT
M	.....	MEASURED
S	.....	SET
D1	.....	INSTRUMENT E275743
1355	.....	BRIAN VAUGHAN SURVEYING LIMITED
QU	.....	ORIGIN UNKNOWN

DISTANCES AND COORDINATES SHOWN ON THIS PLAN ARE IN METRES  
 AND CAN BE CONVERTED TO FEET BY DIVIDING BY 0.3048.

DISTANCES ON THIS PLAN ARE HORIZONTAL GROUND DISTANCES AND CAN  
 BE CONVERTED TO GRID DISTANCES BY MULTIPLYING BY THE AVERAGE  
 COMBINED SCALE FACTOR OF 0.999622230.

BEARINGS ARE UTM GRID DERIVED FROM NETWORK RTK GPS OBSERVATIONS  
 ("SMARTNET") ON MONUMENTS (42 AND 43) AS SHOWN HEREON. HAVING GRID  
 BEARING OF 141°53'10" W. MAGNETIC COURSE (COURSE) ARE REFERRED TO THE  
 TRUE BEARING (UTM ZONE 17 @ 1° N. LONGITUDE).

I CERTIFY THAT:

1. THIS SURVEY AND PLAN ARE CORRECT AND IN ACCORDANCE WITH THE SURVEYS ACT, THE SURVEYORS ACT, THE LAND TITLES ACT AND THE REGULATIONS MADE UNDER THEM.
2. THE SURVEY WAS COMPLETED ON THE 7th DAY OF OCTOBER, 2022.

NOVEMBER 25, 2022

CHRISTOPHER JOHN OYLER  
ONTARIO LAND SURVEYOR

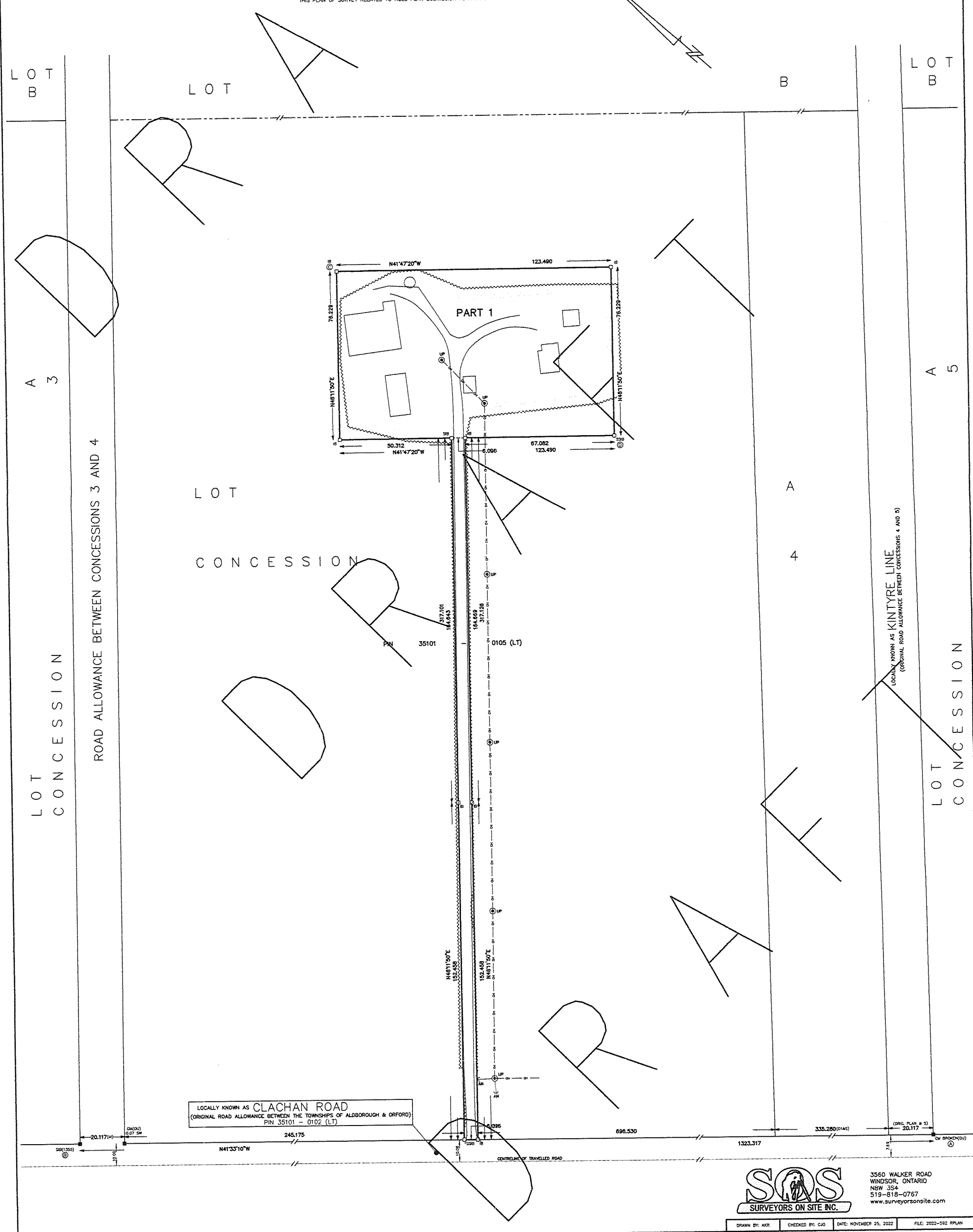
THIS PLAN OF SURVEY RELATES TO AOLS PLAN SUBMISSION FORM NUMBER V-XXXX.

COORDINATES BELOW ARE DERIVED FROM NETWORK RTK GPS OBSERVATIONS (GARTNET) AND ARE REFERRED TO UTM ZONE 17, NAD83 (CSRS) (2010.0).

COORDINATES COMPLY WITH THE RURAL ABSOLUTE ACCURACY PER SEC. 14(2) OF O.R.C. 216/10.

POINT ID	NORTHING	EASTING
(A)	4712443.608	436146.772
(B)	4713433.741	435269.344
(C)	4713534.872	435704.818
(D)	4713392.041	435730.298

COORDINATES CANNOT, IN THEMSELVES, BE USED TO RE-ESTABLISH CORNERS OR BOUNDARIES SHOWN ON THIS PLAN.



3560 WALKER ROAD  
WINDSOR, ONTARIO  
N8W 3S4  
519-818-0767  
[www.surveyorsonsite.com](http://www.surveyorsonsite.com)

DRAWN BY: AKR	CHECKED BY: CJO	DATE: NOVEMBER 25, 2022	FILE: 2022-592 RPLAN
---------------	-----------------	-------------------------	----------------------