



*Building Elgin County's  
first Hospice!*



***Hospice of Elgin is  
building a 17,000 sq ft  
“cottage-like” healthcare  
facility.***

- Elgin County is the last region without a Hospice in Southwestern Ontario.
- With no dedicated palliative care beds in the hospital, there is an immediate need for a Hospice.
- 75% of Canadians want to die at home, but only 15% do.
- We have an aging population, higher than the provincial average.
- Caregiver burnout is on the rise.



Hospice will  
provide care to  
**500**  
individuals and 4,000  
family members each  
year



Palliative Care Clinic



Ten private hospice  
suites offering 24-7 care



Dining and living room, for  
more of life's celebrations



A spiritual care space for  
all faiths and traditions



A family sleep room allowing  
loved ones to stay overnight



Children's play space



Two suites dedicated to respite,  
allowing individuals to return  
home after a short stay



Grief and Bereavement Centre

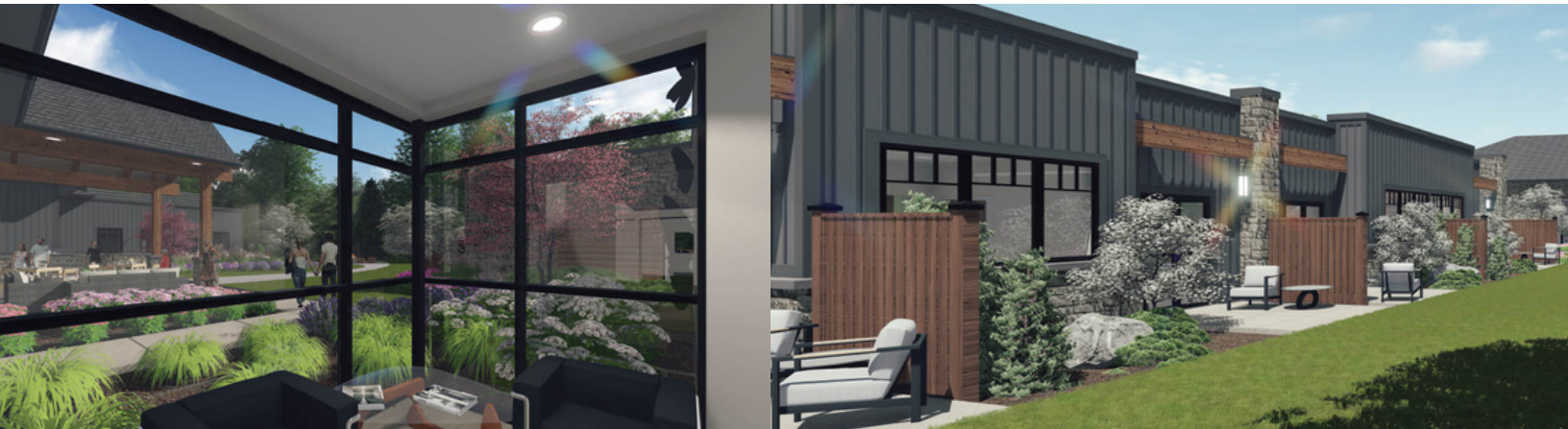


A family café for families  
to refuel

***\$17 million is needed to build Hospice of Elgin,  
a project that will impact our community for  
generations to come!***

- Hospice will be built at 8 South Edgeware Road, St. Thomas, Ontario
- Construction is on the horizon, with plans to begin in early 2024!
- Once doors open, care will be offered at **no cost**.
- Care will be provided for individuals and their entire family, and most care will help individuals stay in their home.
- Hundreds of passionate community volunteers are leading this project.

75%  
raised  
so far!



Types of Charitable Gifts: Cash Gifts, Pledges, Gift in Will (Bequest), Securities, Life Insurance, Re-Insured Gift Annuity, Registered Retirement Funds – RRSPs & RRIFs, Real Estate.

**HOW TO  
DONATE**



IN PERSON



BY PHONE



ONLINE

**Contact Us**

**Hospice of Elgin**

519.631.7495 | [www.elginhospice.com](http://www.elginhospice.com)

613 Talbot Street, unit 102,

St. Thomas, ON N5P 1C6

Charitable Registration # 701658916 RR0001