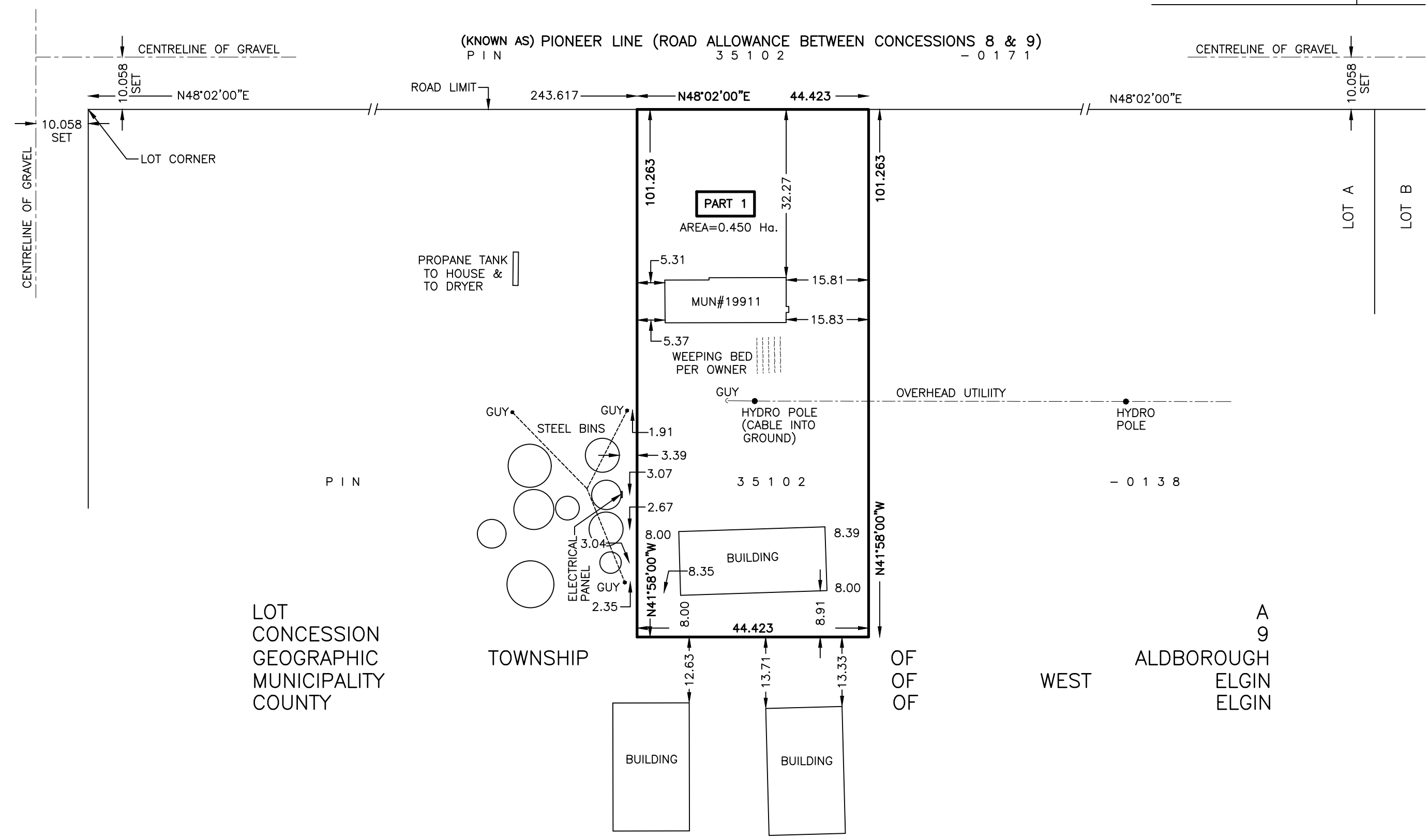


SCHEDULE OF PARTS			
PART	LOT	CONCESSION	PIN
1	PART OF A	9	PART OF 35102-0138

THIS PLAN COMPRISES PART OF PIN 35102-0138



**PLAN OF SURVEY OF
PART OF LOT A
CONCESSION 9
GEOGRAPHIC TOWNSHIP OF ALDBOROUGH
MUNICIPALITY OF WEST ELGIN
COUNTY OF ELGIN**

SURVEYOR'S CERTIFICATE

- I CERTIFY THAT:
- THIS SURVEY AND PLAN ARE CORRECT AND IN ACCORDANCE WITH THE SURVEYS ACT, THE SURVEYORS ACT, THE LAND TITLES ACT, AND THE REGULATIONS MADE UNDER THEM.
 - THE SURVEY WAS COMPLETED ON THE 1st DAY OF JUNE, 2022.

(DATE) S.D. HOOK
ONTARIO LAND SURVEYOR

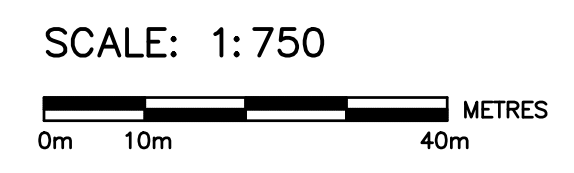
NOTES

BEARINGS ARE UTM GRID, DERIVED FROM OBSERVED REFERENCE POINTS A AND B, BY REAL TIME NETWORK (RTN) OBSERVATIONS, UTM ZONE 17, NAD83 (CSRS) (2010) TOPNET.
DISTANCES ARE GROUND AND CAN BE CONVERTED TO GRID BY MULTIPLYING BY THE COMBINED SCALE FACTOR OF 0.99973954.
OBSERVED REFERENCE POINTS (ORP) A & B: UTM, ZONE 17, NAD83 (CSRS) (2010). COORDINATES TO RURAL ACCURACY PER SEC. 14 (2) OF O. REG. 216/10.

POINT ID	NORTHING	EASTING
ORP A		
ORP B		

COORDINATES CANNOT, IN THEMSELVES, BE USED TO RE-ESTABLISH CORNERS OR BOUNDARIES SHOWN ON THIS PLAN.

- DENOTES FOUND
- DENOTES SET
- IB DENOTES IRON BAR
- PB DENOTES PLASTIC BAR
- SIB DENOTES STANDARD IRON BAR
- CM DENOTES CONCRETE MONUMENT
- M DENOTES MEASURED
- Inst DENOTES INSTRUMENT
- S DENOTES SET
- PIN DENOTES PROPERTY IDENTIFIER NUMBER ORP DENOTES OBSERVED REFERENCE POINT



THE INTENDED PLOT SIZE OF THIS PLAN IS 558.8mm IN WIDTH BY 431.8mm IN HEIGHT WHEN PLOTTED AT A SCALE OF 1:750.

DISTANCES AND COORDINATES SHOWN ON THIS PLAN ARE IN METRES AND CAN BE CONVERTED TO FEET BY DIVIDING BY 0.3048

DRAWN BY:	C.A.
CHECKED BY:	S.D.H. / C.A.
PLAN NUMBER:	22111

**HOOK & TODGHAM
SURVEYING
INCORPORATED**

CHATHAM ONTARIO

PHONE: 1-519-354-6122 FAX: 1-519-354-6129