

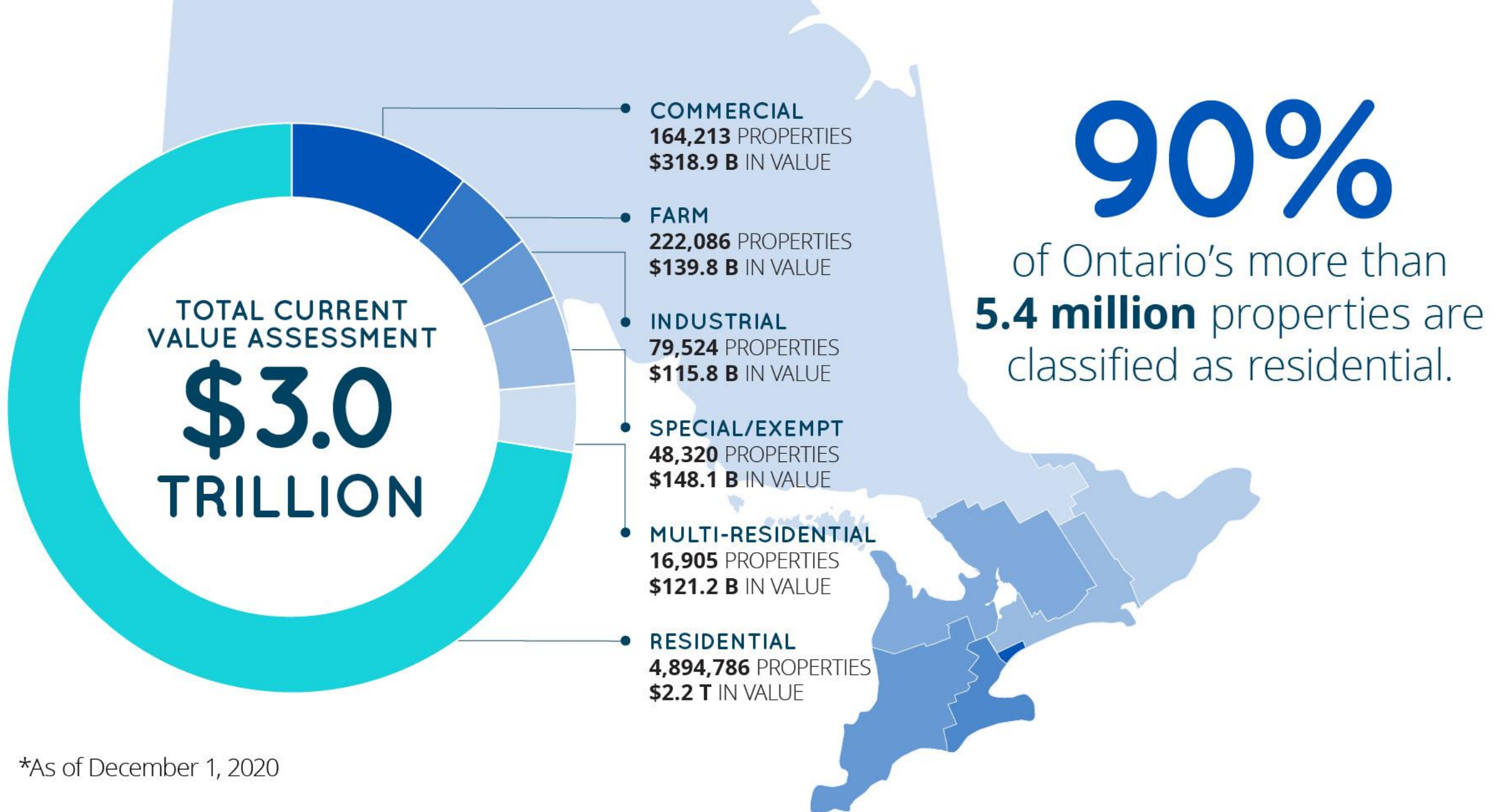
ABOUT MPAC

Valuing Ontario Together



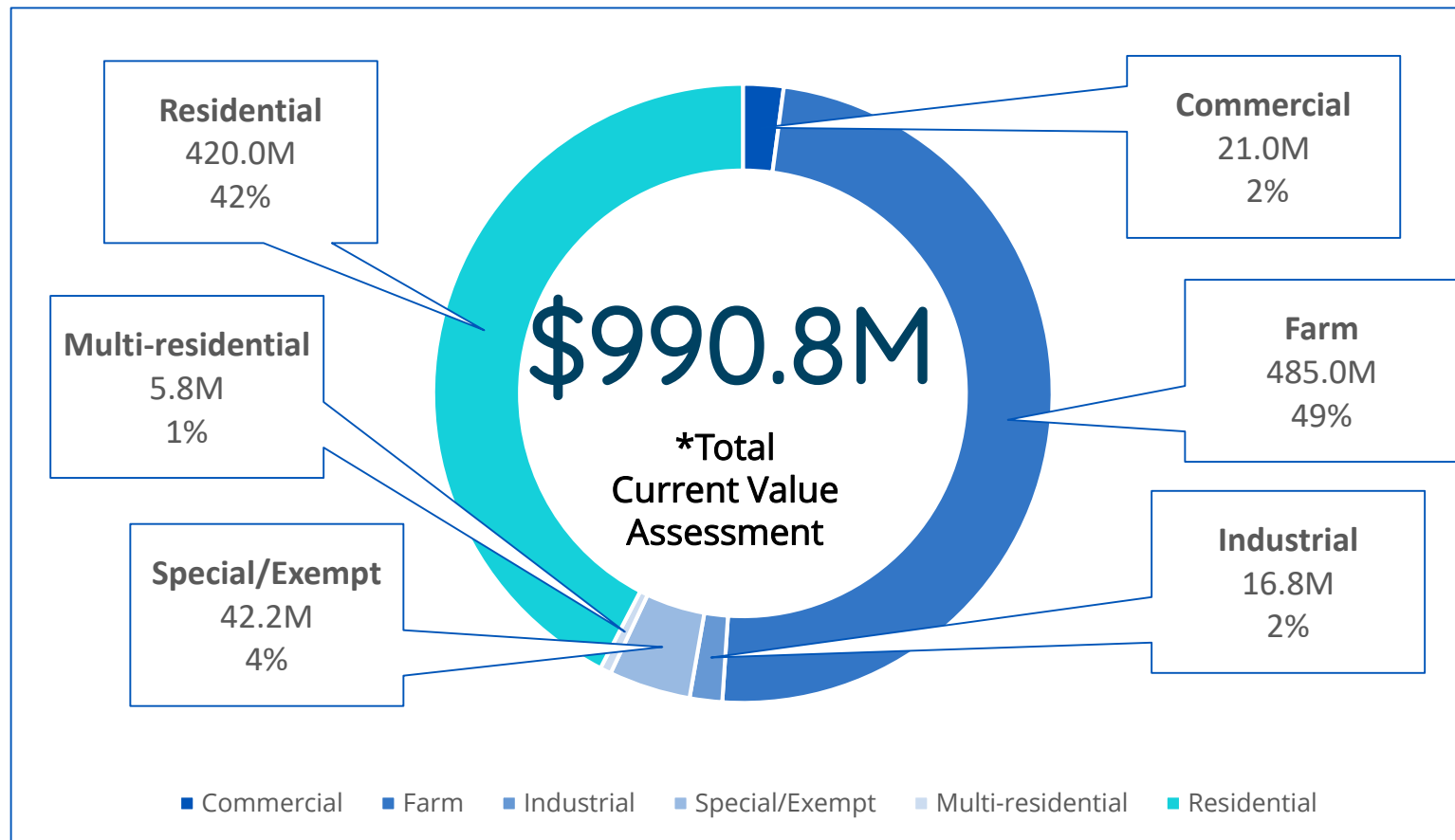
MUNICIPAL
PROPERTY
ASSESSMENT
CORPORATION





*As of December 1, 2020

Municipality of West Elgin



***2021 Tax Year**

***Destination CVA at time of roll return for 2021 Tax Year based on 2016 Current Value Assessment (CVA)**

ONTARIO'S PROPERTY ASSESSMENT AND TAXATION SYSTEM



Government of Ontario

Establishes the province's assessment and taxation laws and determines the education tax rates.



MPAC

Determines property classifications and assessments for all properties in Ontario in accordance with legislation set by the Ontario government



Municipalities

Determine revenue requirements, set municipal tax rates and collect property taxes to pay for municipal services.*



Property owners

Pay property taxes that fund community services and education taxes that fund public schools.

*Provincial Land Tax and levies by local boards are collected in unincorporated areas and contribute toward important services.



THE NEXT PROVINCE-WIDE ASSESSMENT UPDATE

PROPERTY ASSESSMENT UPDATE

Property values
continue to be based
on the market at:

JANUARY 1, 2016

which is our current
valuation date.

MPAC'S ROLE IN THE BUILDING PERMIT PROCESS

Municipalities rely on MPAC to take their building permits and plans and **turn them into assessment.**



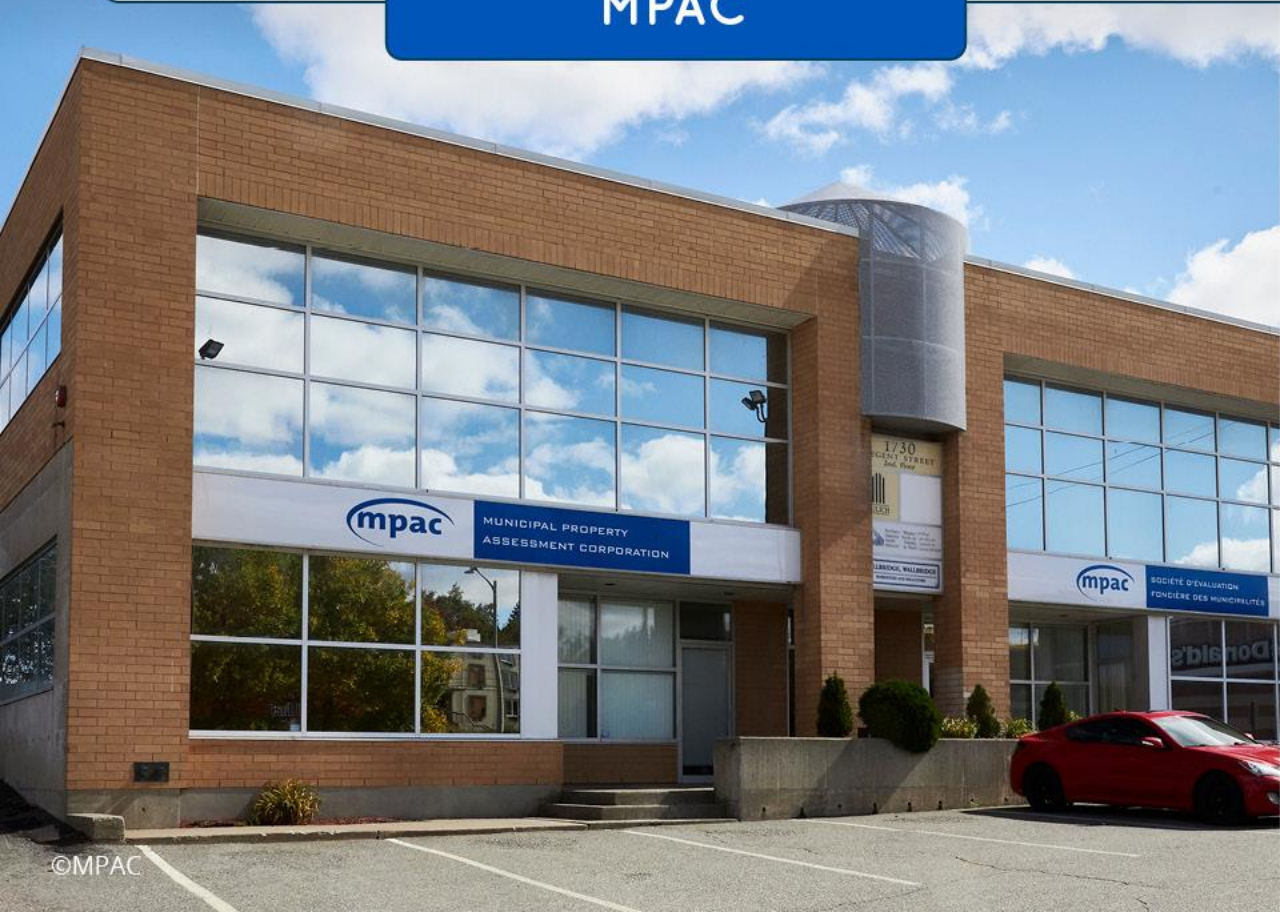
Municipalities tax property owners **based on those assessments.**



The sooner MPAC can deliver assessments, the sooner **municipalities can realize new revenue.**

MPAC

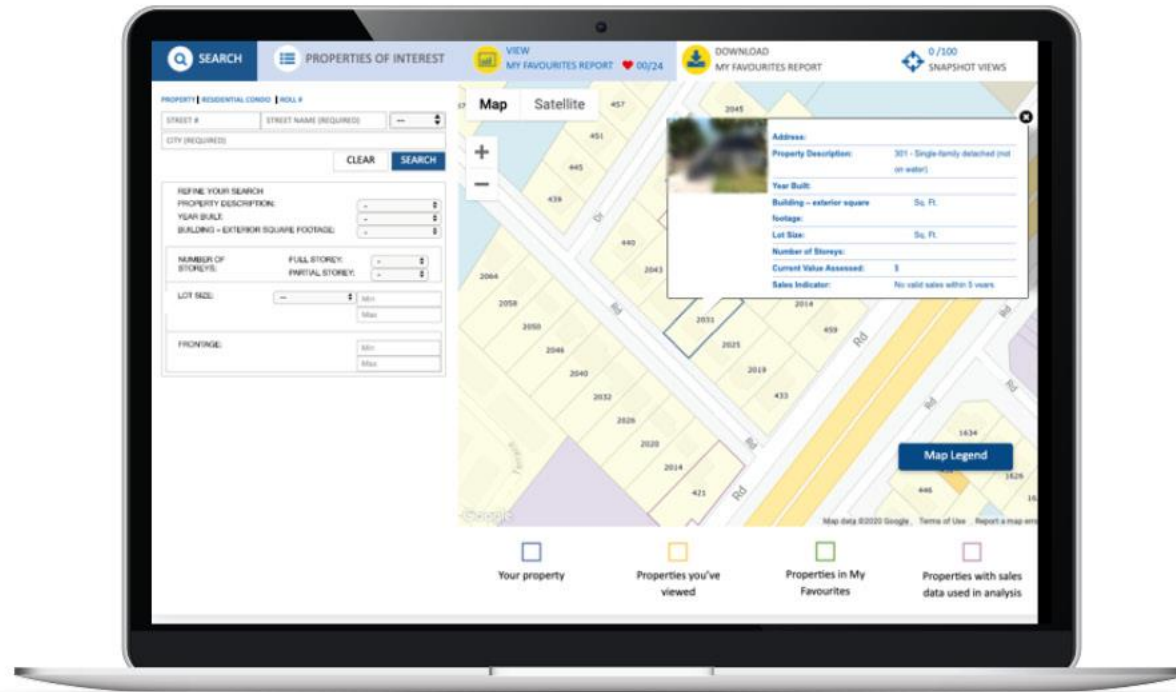
MUNICIPALITIES





We reflect changes to
properties when we mail
Property Assessment
Notices every year

About MyProperty



View **property info** and **compare** to other assessments in your neighbourhood



View details that explain **how we assessed** the property



Review steps to file a **Request for Reconsideration** online

2020 MUNICIPAL PARTNERSHIPS REPORT

In 2020, the pandemic made our **collaborative relationships** with municipalities more important than ever.

Read our 2020 Municipal Partnerships Report to learn about how we:

- Responded to the postponement of the Assessment Update by shifting priorities to meet the needs of municipalities
- Found new ways to access information we needed to capture \$37.3 billion in new assessment across Ontario
- Stayed connected with the municipal sector virtually
- Are transforming the ways we share data with municipalities

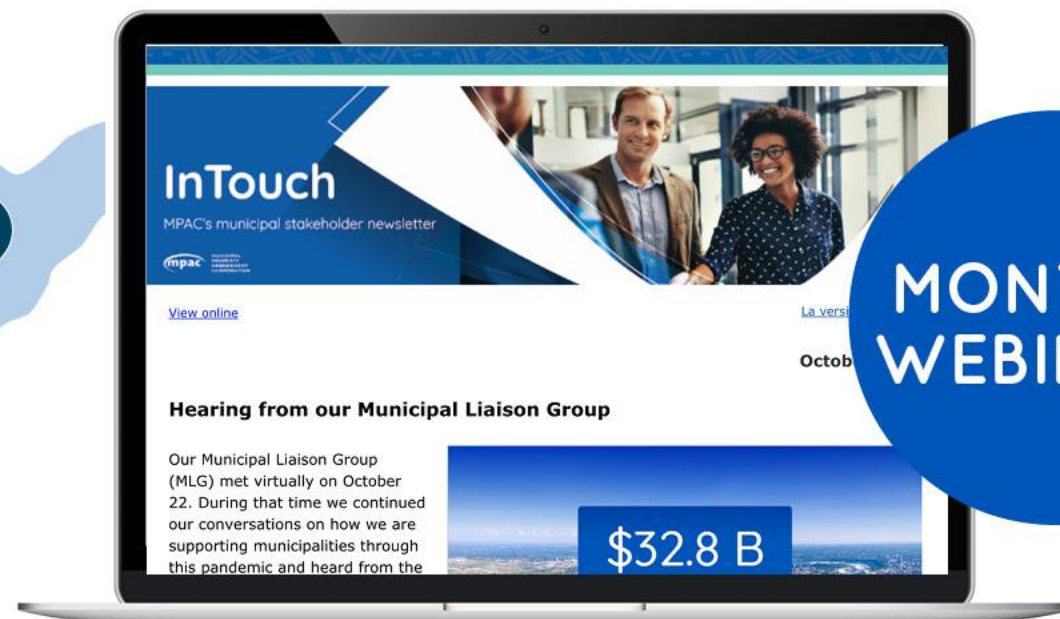
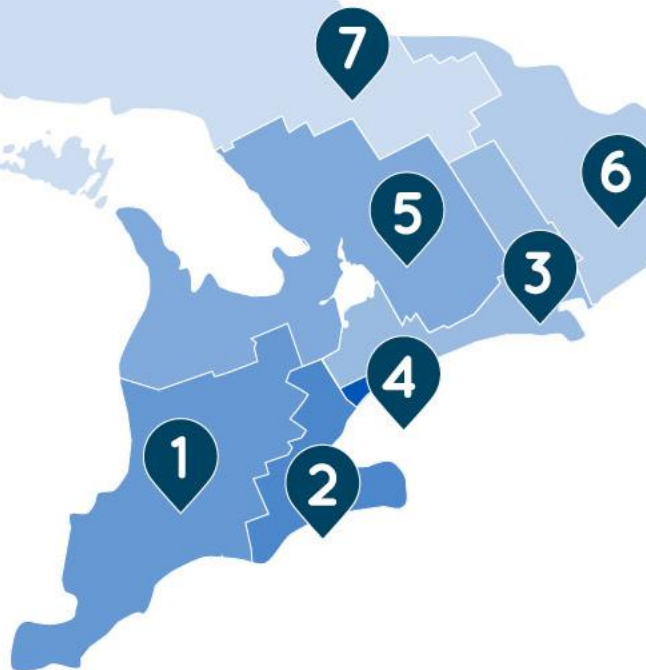
[Click here](#) to read the report or visit mpac.ca/partnership



MUNICIPAL
PROPERTY
ASSESSMENT
CORPORATION

Our municipal and stakeholder relations teams live and work in your communities and **we're here to help.**

Go to **mpac.ca/municipalities** to find your local Account Manager





MUNICIPAL
PROPERTY
ASSESSMENT
CORPORATION