

ALL COLOURS TO BE CONFIRMED
WELDED ALUMINUM CONSTRUCTION

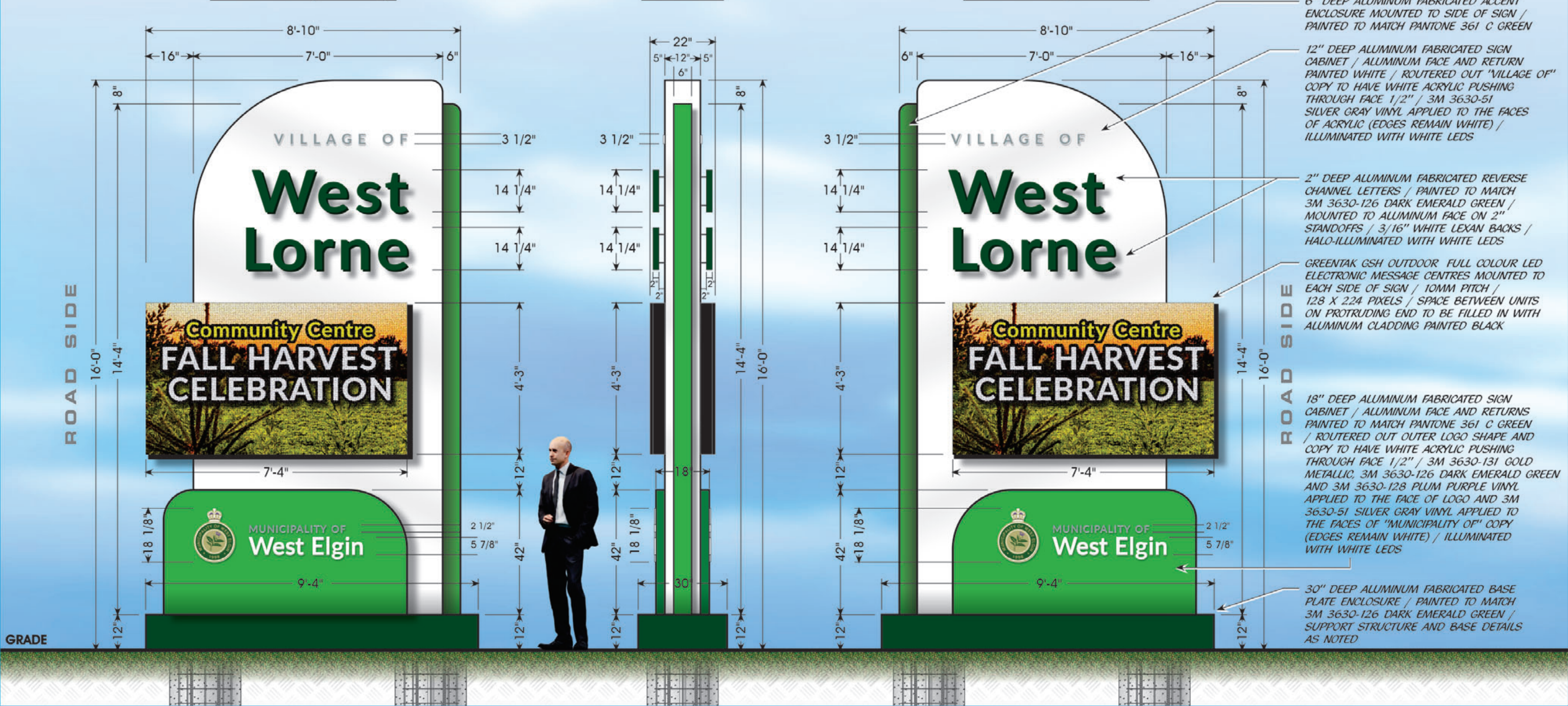
BASE DETAILS

- [2] 6" X 6" X 1/4" OR [2] 5" X 5" X 1/4" THK STEEL H.S.S.
- [2] 14" X 14" X 1" THK STEEL PLATES
- [2] 1" DIAMETER X 3'-0" LG ANCHOR BOLTS (QTY: 4 PER)
- [2] 24" DIAMETER X 5'-0" DEPTH CONCRETE FOOTING (ALGERED)
- [1] 2" DIAMETER PVC PIPE ELECTRICAL CONDUIT ONE SIDE
- 15M AND 10M STEEL REINFORCEMENT BARS

FRONT VIEW (SIDE ONE)

END VIEW

FRONT VIEW (SIDE TWO)



SIGN TYPE: **D/S ILLUMINATED GATEWAY MONUMENT SIGNS - PROPOSAL "A"**

CUSTOMER: MUNICIPALITY OF WEST ELGIN

ADDRESS: GRAHAM ROAD,
WEST LORNE, ONTARIO

W.O. #

DESIGN NO. **H283 SK07 - pg.1**

SCALE: 3/8" = 1'-0"

ACC. EXEC.: MIKE VAN ESCH

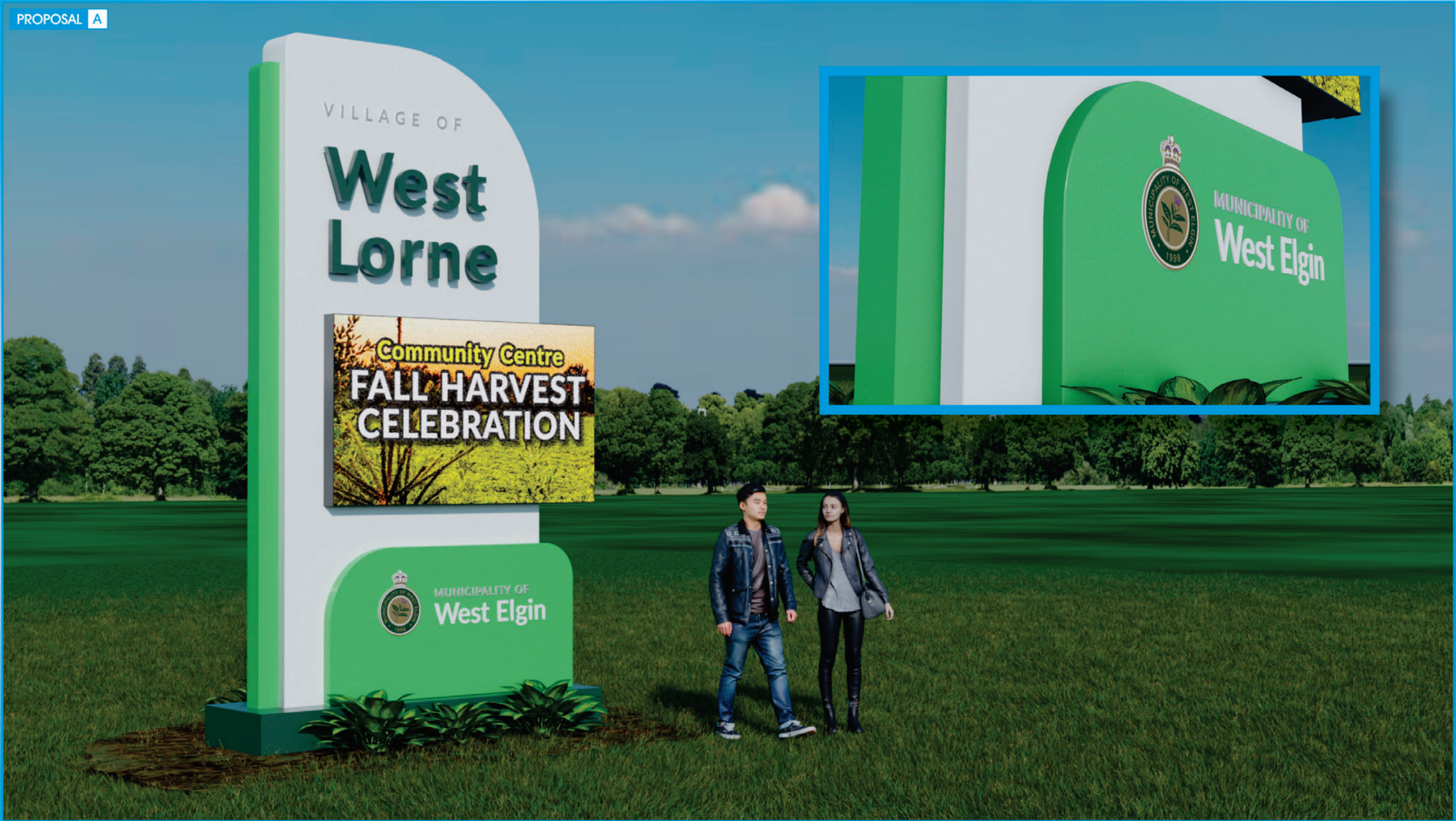
DESIGNER: BOB DARNELL

APPROVED BY CUSTOMER:

DESIGN DATE: JULY 13 / 2021

REVISION #1:

DATE: _____



SIGN TYPE: D/S ILLUMINATED GATEWAY MONUMENT SIGNS - PROPOSAL "A"			DESIGN NO. H283 SK07 - pg.2	DESIGN DATE: JULY 13 / 2021
CUSTOMER: MUNICIPALITY OF WEST ELGIN			SCALE: NOT TO SCALE	REVISION #1:
ADDRESS: GRAHAM ROAD, WEST LORNE, ONTARIO			APPROVED BY CUSTOMER:	DATE:
W.O. #			ACC. EXEC.: MIKE VAN ESCH	
			DESIGNER: BOB DARNELL	
ALL ARTWORK REMAINS THE PROPERTY OF EXCELLENT SIGNS & DISPLAYS INC.				

