



***When Every
Moment
Matters***

**Building a Hospice
for Elgin County**



“Currently, those who require care are having to be placed in sites outside our community or are having to be institutionalized to meet this level of care.

Take a moment to imagine yourself lying at the end-of-life in a strange and unfamiliar place, vulnerable and alone, and away from home knowing that your family is unable to travel to be with you or can do so, but only under extreme burden.”

- Dr. Waleed Chehadi, Chief of Staff, STEGH

WHY ELGIN

- There are **no** dedicated palliative care beds at our Hospital
- The largest growing vulnerable population is the ‘**aging single senior**’ who often lacks caregiver support
- With an aging population, the pressure on the healthcare system and families continue to grow
- Regional Hospices have growing wait lists

What is Hospice?

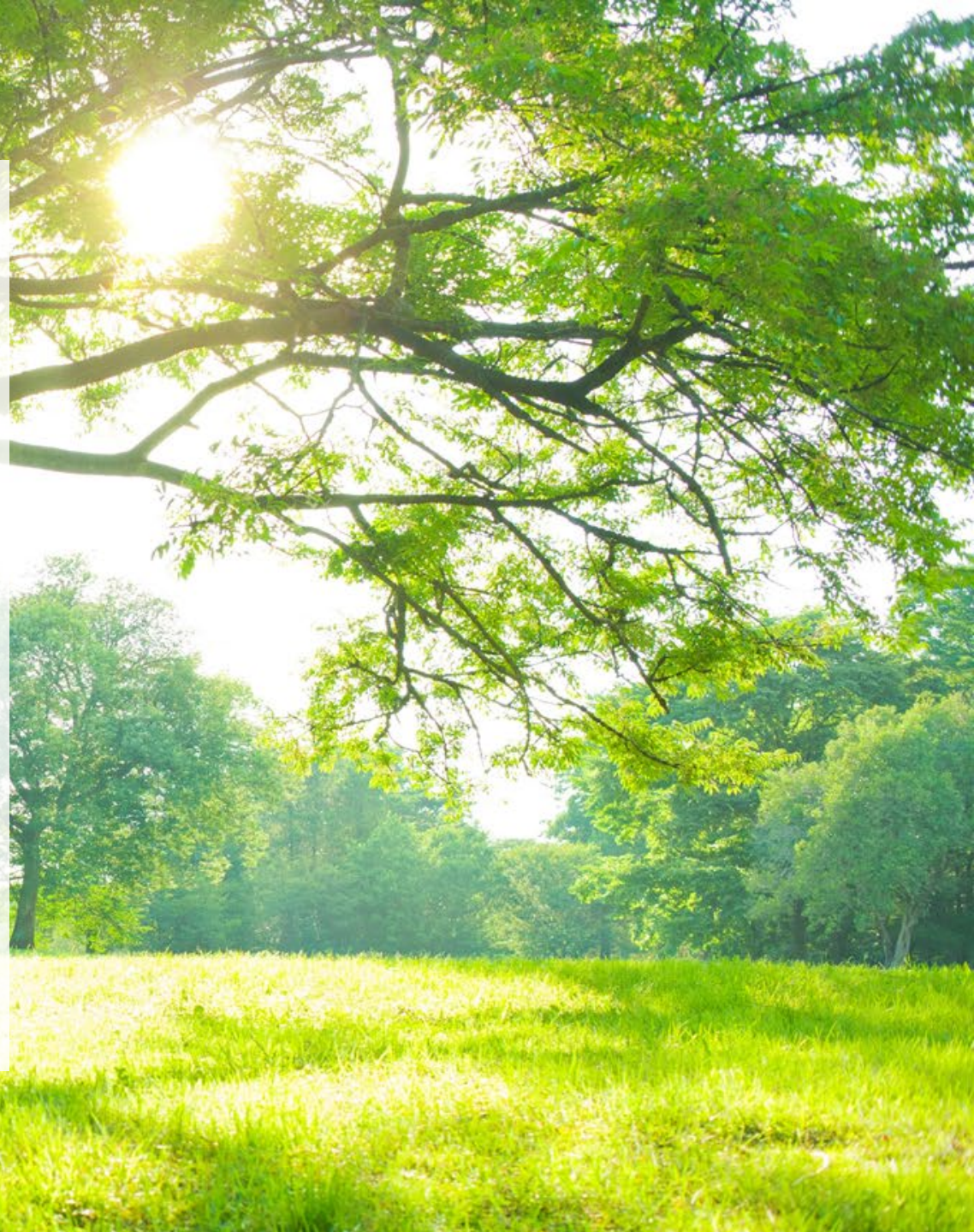
Hospice is both a “place” and “type” of care.

Hospice is a healthcare facility providing 24-7 expert palliative care in a welcoming home-like environment.

Hospice palliative care is about relieving pain and suffering while improving the quality of life for those who are living with and dying from a life-limiting illness.

Holistic person and family-centered care addressing the physical, emotional, psycho-social and spiritual and culturally appropriate care needs

Care is provided to the individual, their caregiver, and family and provided at home, in the community, or in Hospice.



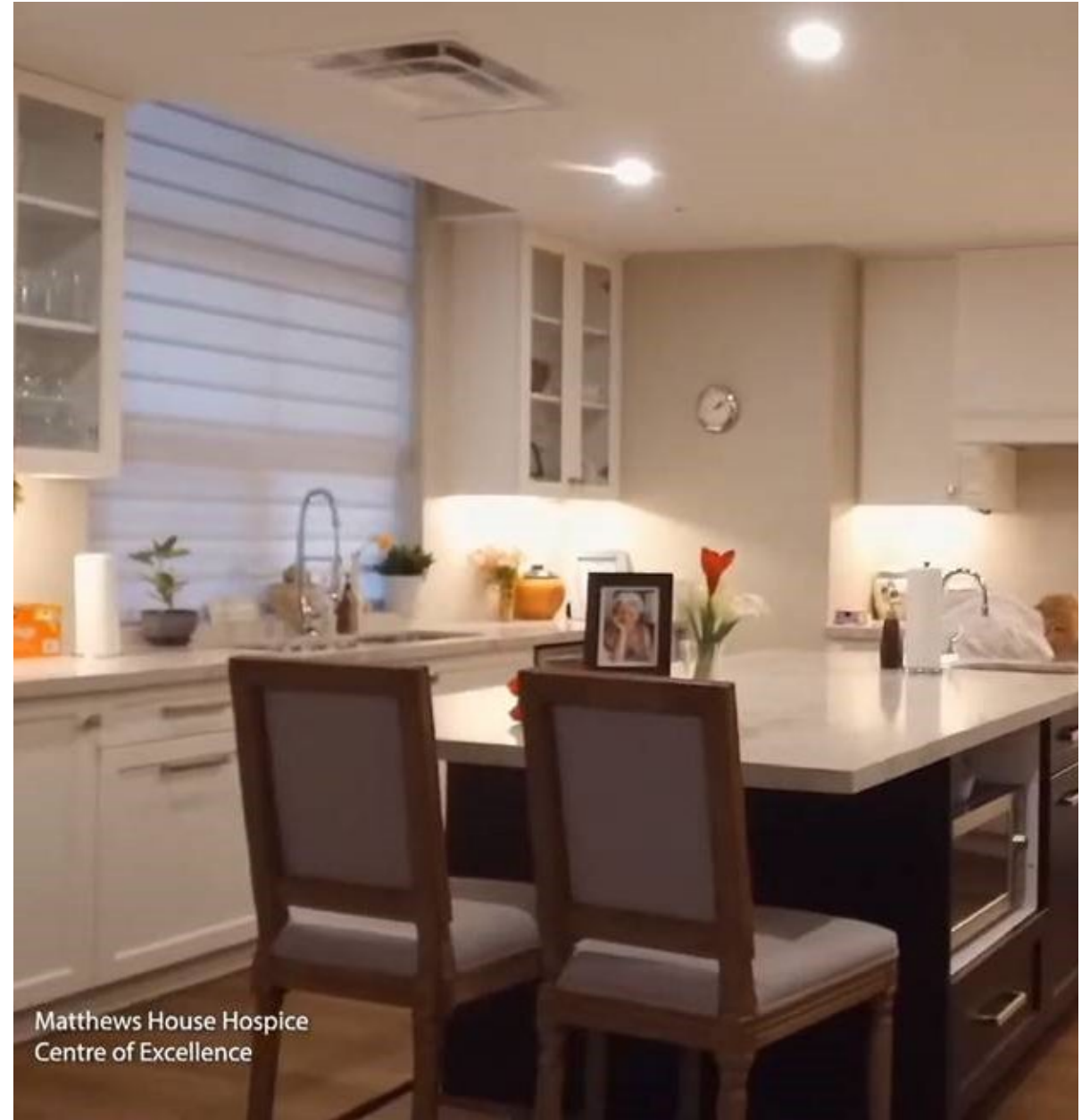


Hospice: Campus of Compassionate Care

- Healthcare facility with a home-like atmosphere, offering private suites with 24-7 specialized end-of-life care
- Palliative care clinic
- Caregiver support and respite
- Grief and bereavement programs (**virtual counselling services – available now**)
- Wellness therapies (massage, pet therapy, cooking for one, etc.)
- Children's program
- Navigation and education supports









Renderings provided by S2 Architecture

Renderings are artistic representations and are subject to change.



The **Hospice** Difference ...

Beautiful home-like space

Personalized menu (when and where you would like)

Control - temperature, lights, sounds

Flexibility- No visitor hour restrictions, free parking, and pets are welcome

A focus on life's moments and joy (music pharmacy, virtual reality, smart TVs, and more)

Access to nature (beds go outside, bird houses, gardens)

Expert care for the entire family (holistic care, family sleep space, dining room, kids play area)

Impact Beyond Care

- More than 500 individuals and families are expected to receive care from Hospice each year
- *Hospice care is 1/3 of the costs of hospital acute care costs)*
- 200 volunteers from our community will support the care and operations of Hospice
- Job creation (30+ new jobs) and economic benefits (\$13 million+) from construction and ongoing operations
- St. Joseph's Health Care Society is helping our Community bring the vision of a Hospice to life





Our Hearts have landed



Hospice will be located at **2 South Edgeware Road**, centrally located and anchored in a beautiful wooded area, wrapped in the Carolinian forest that is graced with butterflies, birds, and a collection of native species. A special thank you to the City of St. Thomas for gifting such a wonderful location for the future home of Hospice.

Let the Design of Hospice Begin...

HOW CAN YOU HELP?

1. **Learn more** about the Hospice of Elgin
2. **Spread the word**
3. **Advocate for Hospice.** This is a once in a generation project that will care for so many families in our community for years to come.

Our Community. Our Hospice.



HOSPICE OF
ELGIN

Thank you